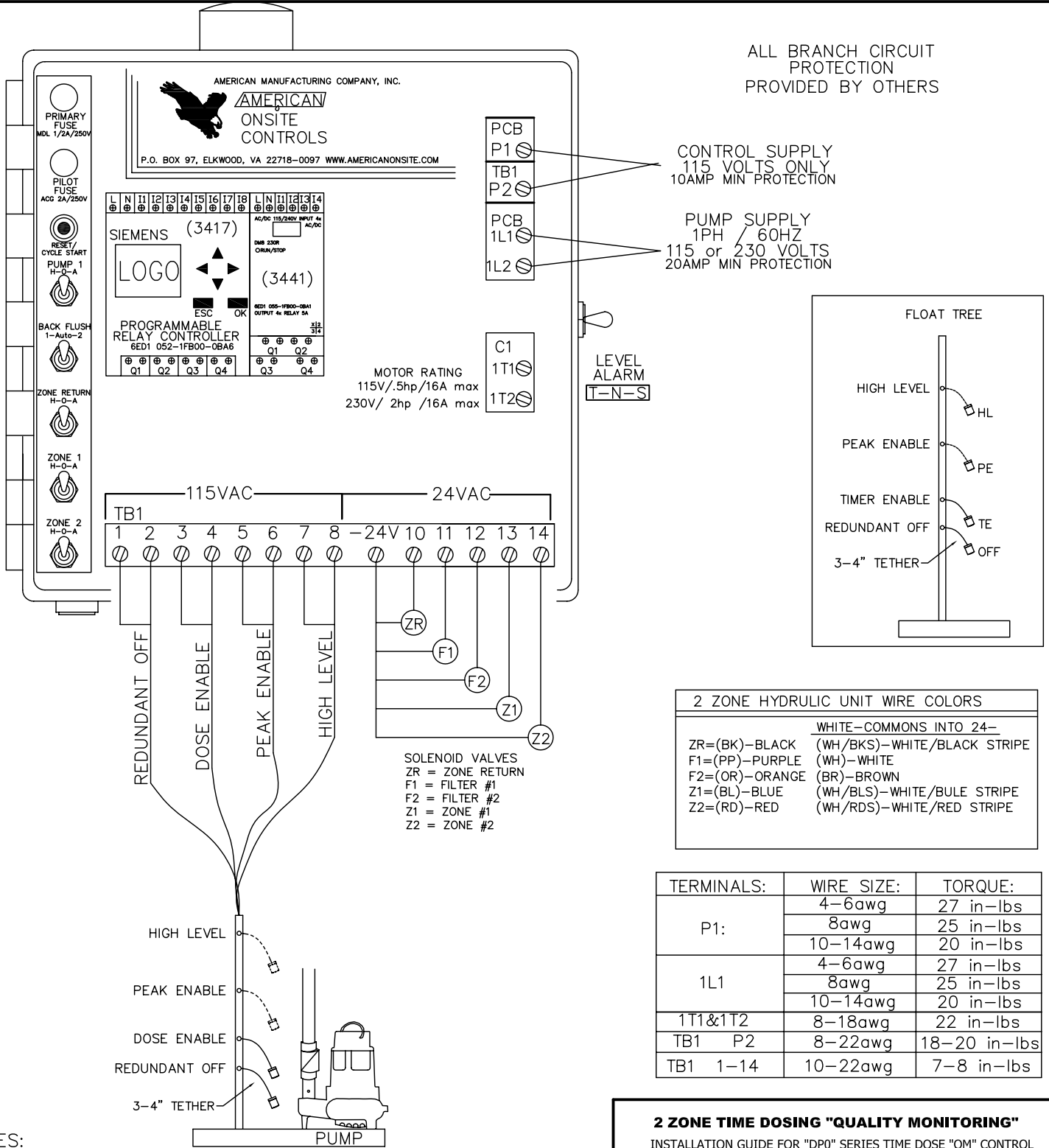




AMERICAN ONSITE CONTROLS

AMERICAN MANUFACTURING COMPANY INC.
 P.O. BOX 97 ELKWOOD, VA 22718
 (800) 345-3132 www.americanonsite.com

ALL BRANCH CIRCUIT PROTECTION PROVIDED BY OTHERS



NOTES:

- PLEASE REVIEW ALL PAGES AND INSERTS IN THIS MANUAL BEFORE ATTEMPTING TO INSTALL ANY CONTROL EQUIPMENT.
- DASHED LINES REPRESENT OPTIONAL EQUIPMENT
- TIME DOSING IS CONTROLLED BY A SIEMENS LOGO! SEE ADDITIONAL MANUAL FOR PROGRAMMING INSTRUCTIONS.
- BF=BACKFLUSH, AND ZR=ZONE RETURN



2 ZONE TIME DOSING "QUALITY MONITORING"
 INSTALLATION GUIDE FOR "DP0" SERIES TIME DOSE "QM" CONTROL
 NEMA 4X, 1 PHASE, OPTIONS: A,J,L

MODEL#: DP022-SAB124-AJL

DWG#: X9114-2ZN

REVISION

-

DATE: 02/26/10

DRAWN BY: SPC

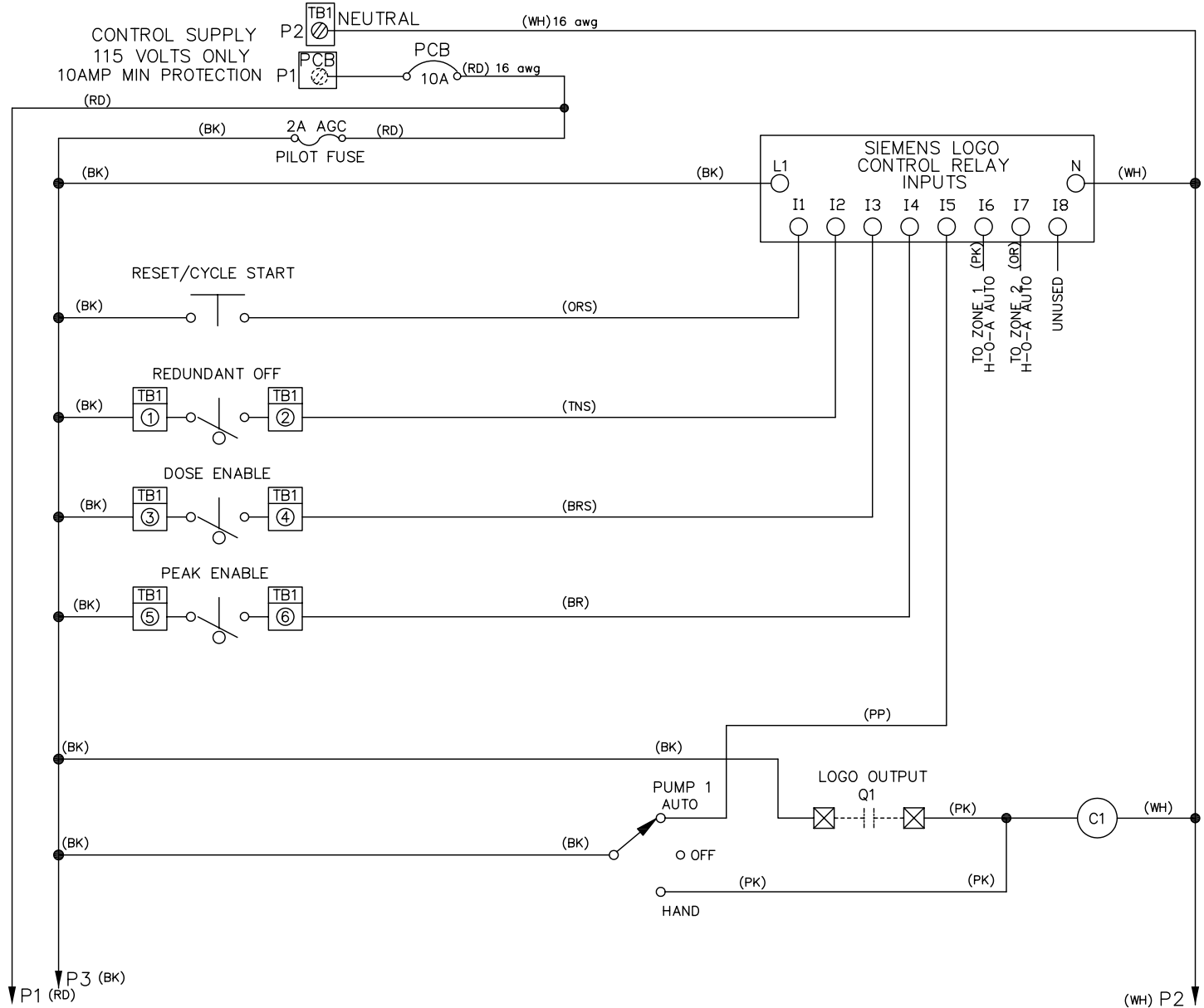
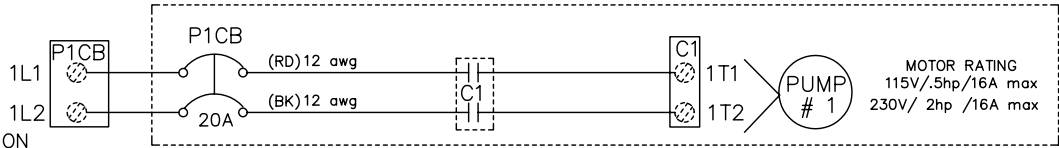
APPROVED

WIRING/ INSTALLATION SCHEMATIC

NOTE:
ALL WIRES ARE 18 awg UNLESS OTHERWISE NOTED.

ALL BRANCH CIRCUIT PROTECTION PROVIDED BY OTHERS

PUMP SUPPLY
115 or 230 VOLTS
1PH / 60HZ
20AMP MIN PROTECTION



POWER SUPPLY INSTALLATION NOTES:

1. DASHED LINES (---) REPRESENT TERMINALS, EQUIPMENT, AND/OR OPTIONS THAT MAY OR MAY NOT BE PRESENT IN EACH SYSTEM COVERED BY THIS MANUAL.
2. BRANCH CIRCUIT PROTECTION MUST BE PROVIDED BY OTHERS. CONSULT NEC AND/OR LOCAL CODES.
3. SINGLE (1) PHASE PUMP MOTORS MUST HAVE INTEGRAL THERMAL OVERLOAD PROTECTION.
4. TEMPERATURE RATING OF FIELD INSTALLED COPPER CONDUCTORS MUST BE AT LEAST 140°F (60°C).
5. FOR PUMPS THAT REQUIRE EXTERNAL CAPACITOR INSTALLATION KITS, SEE "K" PACK INSTALLATION INSERT PROVIDED
6. PUMP SUPPLY MUST MATCH REQUIRED PUMP VOLTAGE. CONDUIT ENTRANCE MUST MATCH ENCLOSURE RATING
7. PUMP AND PANEL VOLTAGE CODE MUST BE EQUIVALENT TO INCOMING PUMP AND CONTROL POWER SUPPLIES.
8. OVERLOAD/MOTOR PROTECTOR UNIT MAY REQUIRE ADJUSTMENT TO MATCH PUMP FULL LOAD AMPS (FLA)
9. SEPARATE OVERLOAD (O.L.) NOT REQUIRED WHEN MOTOR PROTECTORS (MP) ARE SUPPLIED.
10. THE MANUFACTURER RECOMMENDS THAT CONTROL/ALARM SUPPLY BE SEPARATE FROM THE PUMP SUPPLY.
11. REFER TO BACKPLATE LAYOUT ON PAGE 5 FOR THE REQUIRED TORQUE SETTINGS FOR EACH COMPONENT.

COPYRIGHT © 2007 AMERICAN MANUFACTURING COMPANY, INC.

AMERICAN MANUFACTURING COMPANY INC.
ELKWOOD, VIRGINIA 22718

MODEL#: DP022-SAB124-AJL

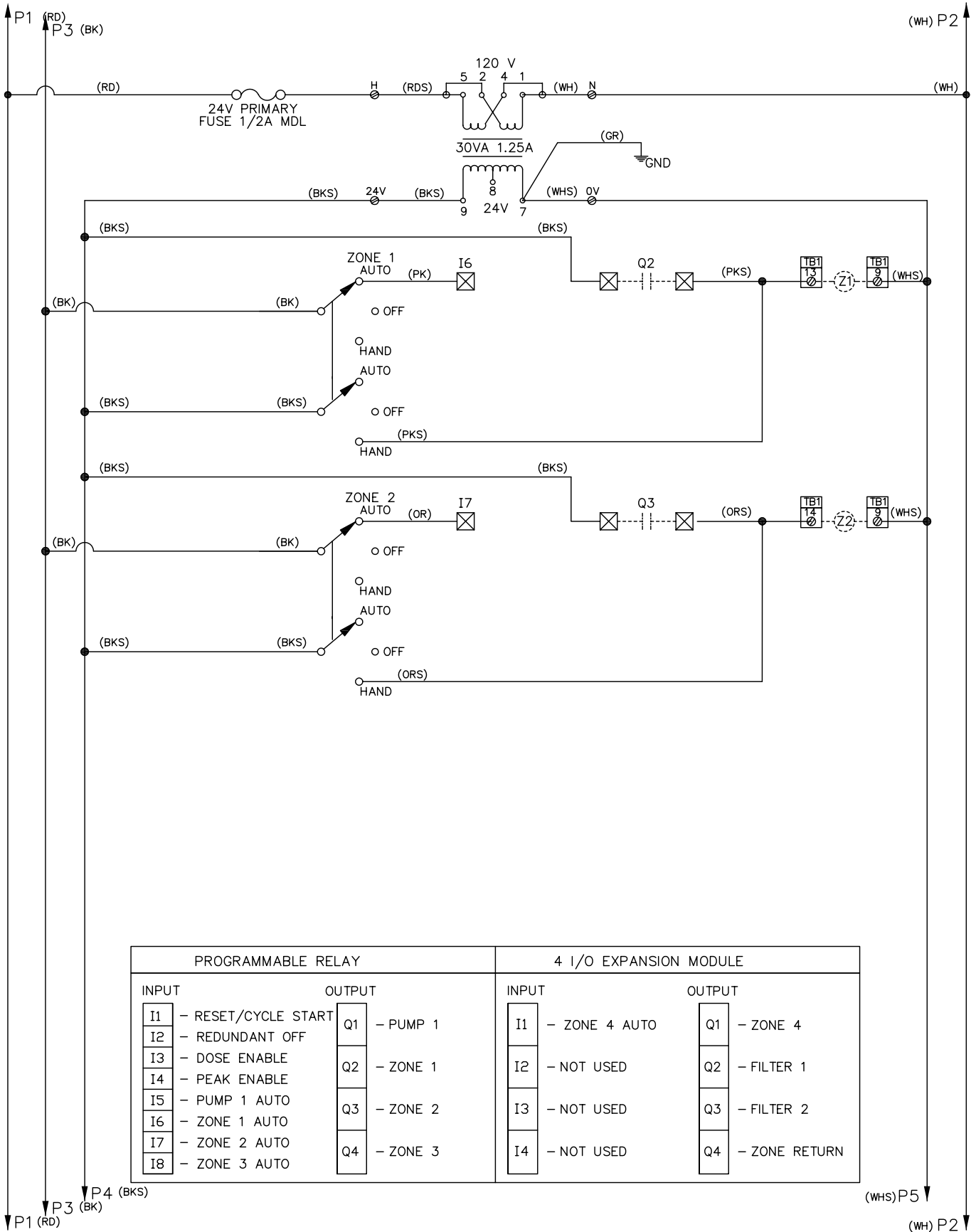
DWG#: X9114-2ZN

DATE: 02/26/10

PAGE 2

INSTALLATION SCHEMATIC

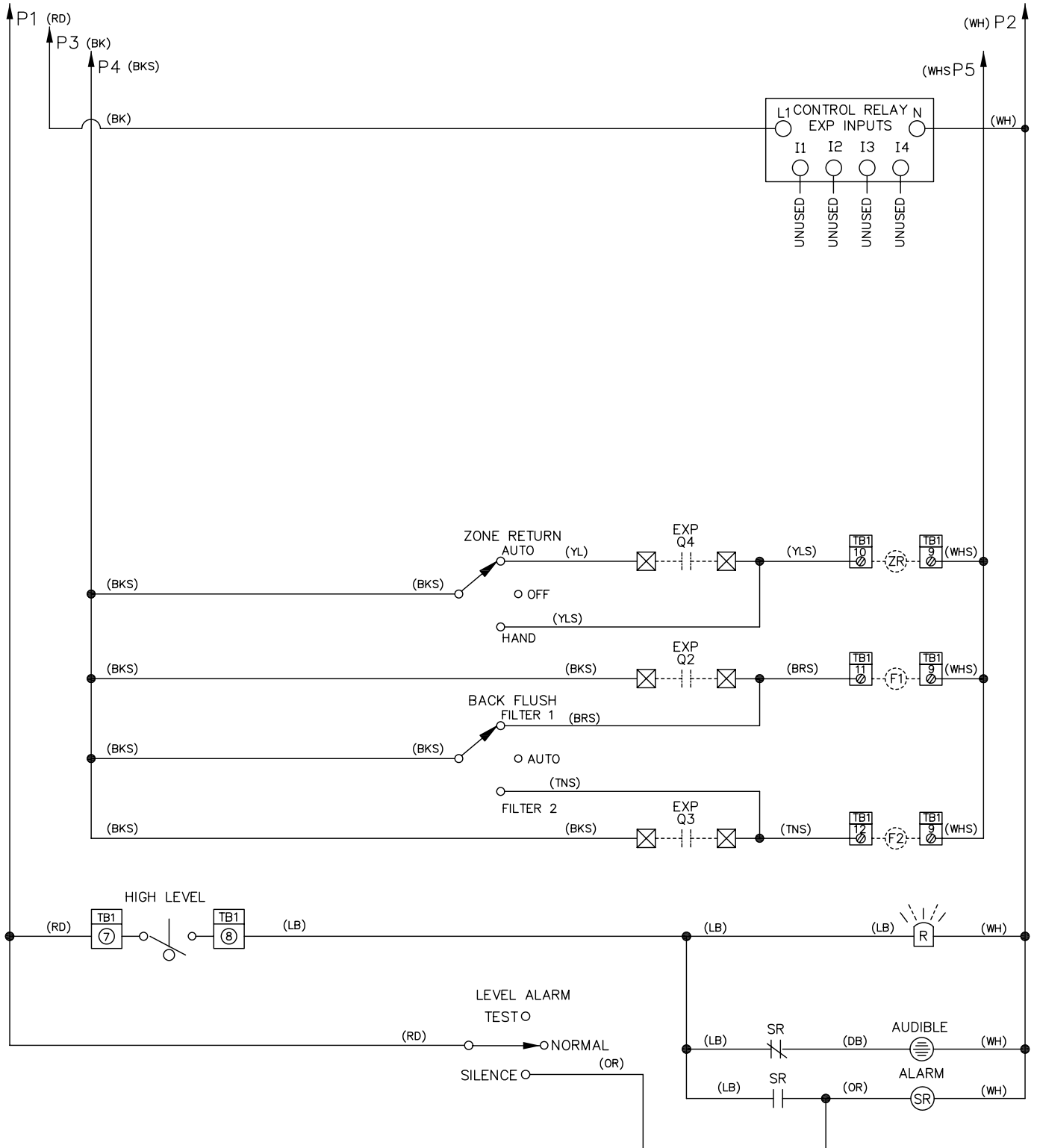
NOTES:
ALL WIRES ARE 18 awg
UNLESS OTHERWISE NOTED.



PROGRAMMABLE RELAY		4 I/O EXPANSION MODULE	
INPUT	OUTPUT	INPUT	OUTPUT
I1 - RESET/CYCLE START	Q1 - PUMP 1	I1 - ZONE 4 AUTO	Q1 - ZONE 4
I2 - REDUNDANT OFF	Q2 - ZONE 1	I2 - NOT USED	Q2 - FILTER 1
I3 - DOSE ENABLE	Q3 - ZONE 2	I3 - NOT USED	Q3 - FILTER 2
I4 - PEAK ENABLE	Q4 - ZONE 3	I4 - NOT USED	Q4 - ZONE RETURN
I5 - PUMP 1 AUTO			
I6 - ZONE 1 AUTO			
I7 - ZONE 2 AUTO			
I8 - ZONE 3 AUTO			

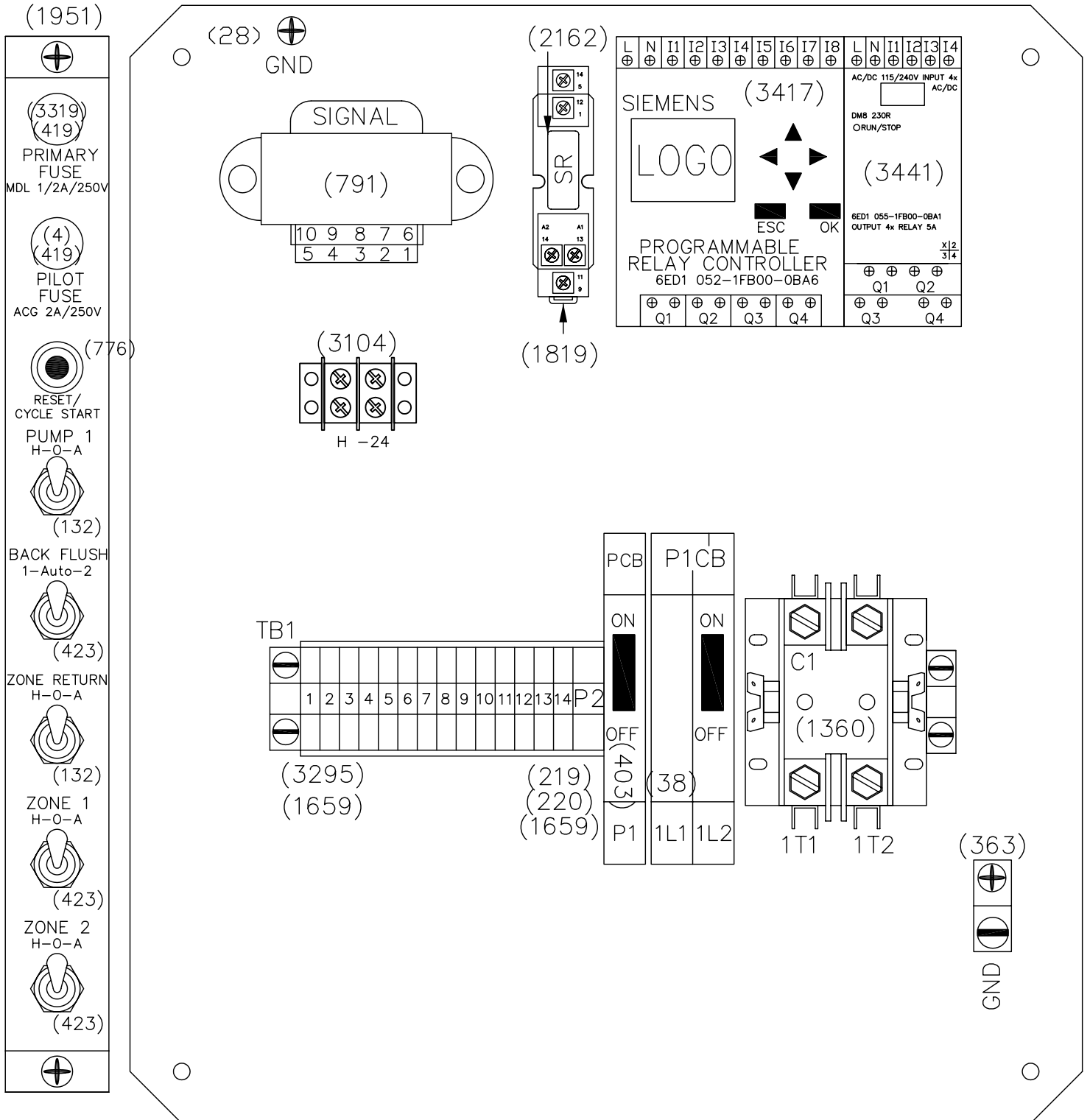
INSTALLATION SCHEMATIC

NOTES:
ALL WIRES ARE 18 awg
UNLESS OTHERWISE NOTED.



BACKPLATE LAYOUT

(55) (148)
 (3560) (266)
 (3592) (629)



BACKPLATE NOTES:

1. (xxxx) DENOTES ITEM NUMBER FOR ALL INSTALLED COMPONENTS
2. INSTALLERS MUST FOLLOW TORQUE SPECIFICATION PROVIDED. TERMINALS ARE LISTED ALONG WITH ACCEPTABLE WIRE SIZES AND MINIMUM/MAXIMUM TORQUE SETTINGS.

SHORT CIRCUIT RATINGS:
 PUMP 1 POWER CIRCUIT
 5kA rms @ 230Vmax

COPYRIGHT © 2007 AMERICAN MANUFACTURING COMPANY, INC.

AMERICAN MANUFACTURING COMPANY INC.
 ELKWOOD, VIRGINIA 22718

MODEL#: DP022-SAB124-AJL
 DWG#: X9114-2ZN

DATE: 02/26/10
 PAGE 5