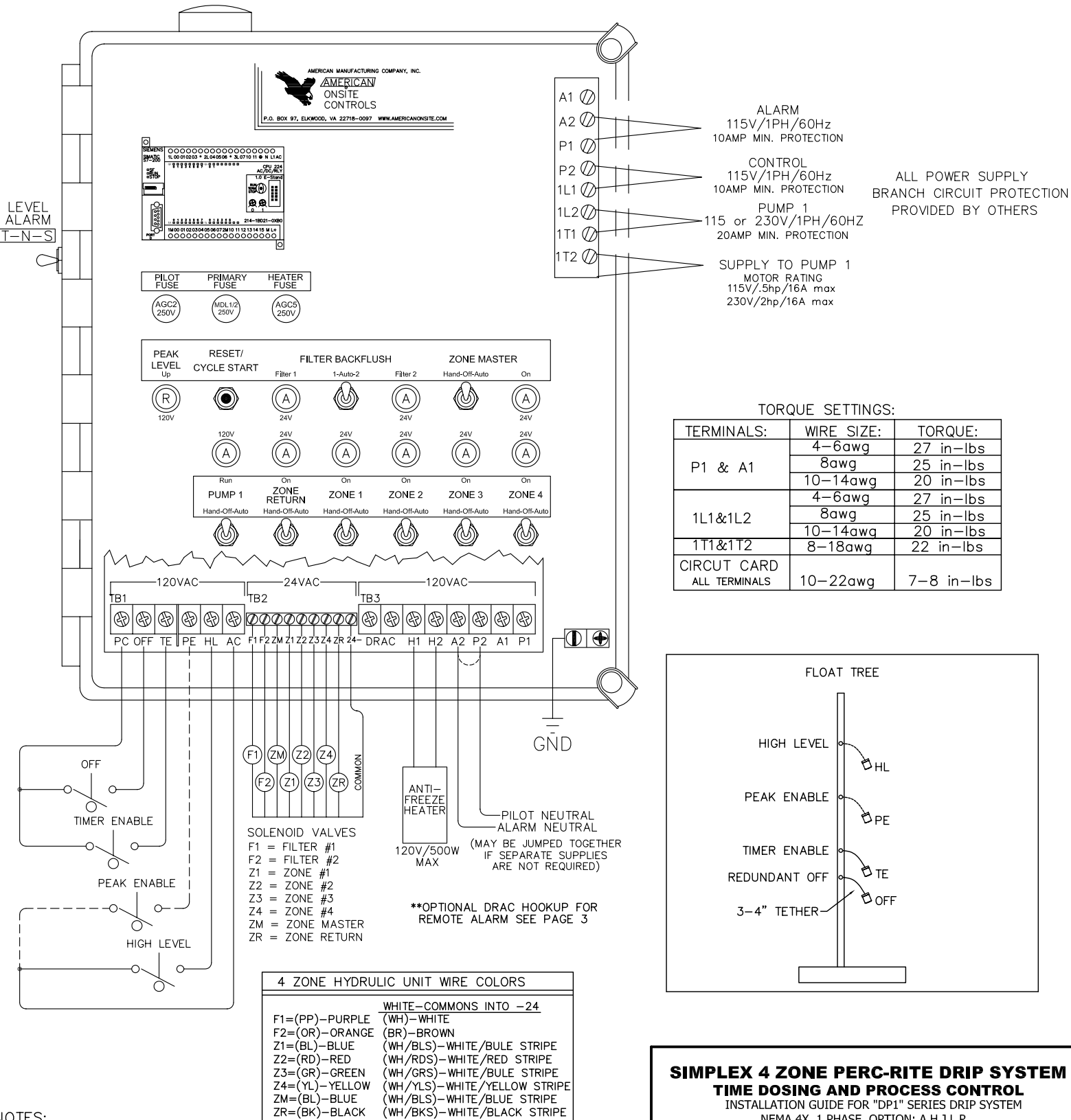




AMERICAN ONSITE CONTROLS

AMERICAN MANUFACTURING COMPANY, INC.
 P.O. BOX 97 ELKWOOD, VIRGINIA 22718-0097
 (800)345-3132 www.americanonsite.com



NOTES:
 1. PLEASE REVIEW ALL PAGES AND INSERTS IN THIS MANUAL BEFORE ATTEMPTING TO INSTALL ANY CONTROL EQUIPMENT.
 2. (----) DASHED LINES MAY REPRESENT OPTIONAL EQUIPMENT.
 3. TIME DOSING IS CONTROLLED BY SIEMENS PLC UNIT.
 4. REFER TO TORQUE SETTINGS TO PROPERLY CONNECT USER SUPPLIES ON PAGE 4.

Copyright © 2007 AMERICAN MANUFACTURING COMPANY, INC.



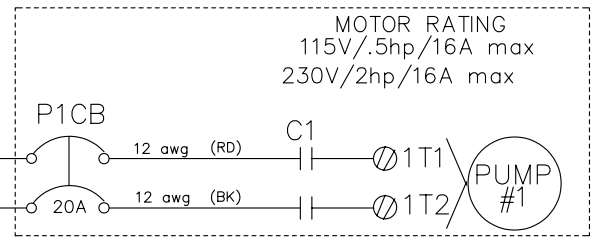
SIMPLEX 4 ZONE PERC-RITE DRIP SYSTEM TIME DOSING AND PROCESS CONTROL INSTALLATION GUIDE FOR "DP1" SERIES DRIP SYSTEM NEMA 4X, 1 PHASE, OPTION: A,H,J,L,R		
MODEL#:	DP124-SAB124-AHJLRX(MV)	
DWG#:	X9157P	REVISION D
DATE:	06/15/08	APPROVED
FILE PATH:	DRAWN BY: RJW	
S:\Data\Controls\AutoCADLT2000\X_&_Lightning-Panels\X9157P.dwg	PAGE 1	

POWER SUPPLY INSTALLATION SCHEMATIC

NOTES:
ALL WIRES ARE 18 awg
UNLESS OTHERWISE NOTED.

SIMPLEX POWER CIRCUIT

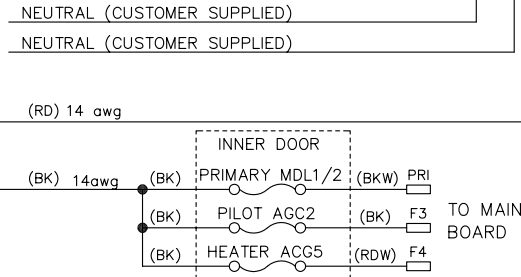
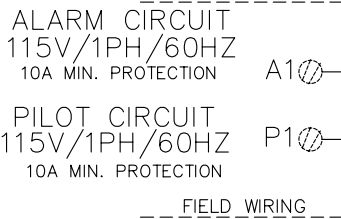
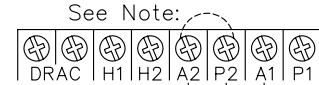
Note: PUMP SUPPLY 115V REQUIRES
1L1 TO BE HOT LEG.
ALL BRANCH CIRCUIT
PROTECTION
PROVIDED BY OTHERS



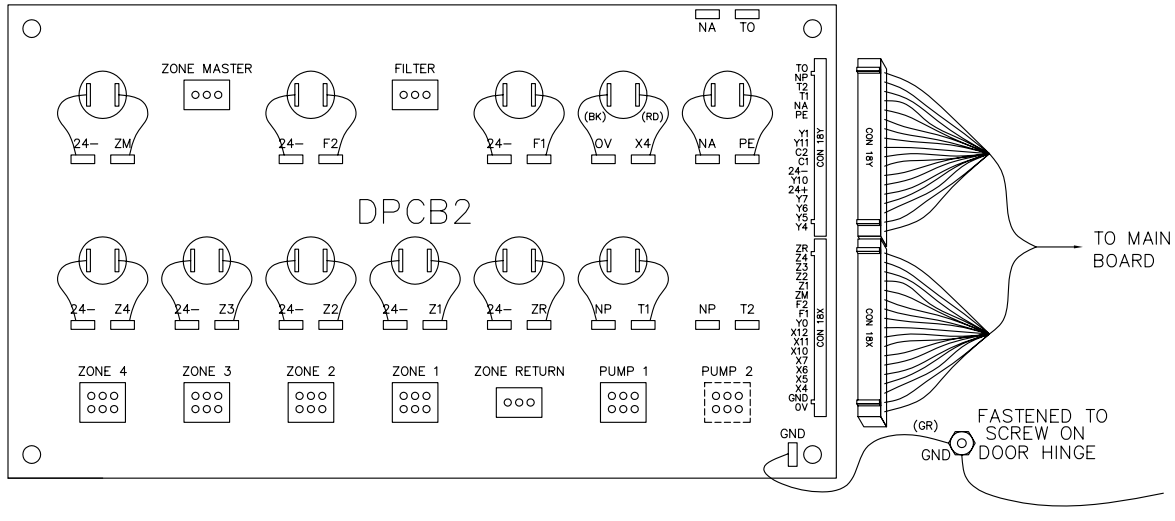
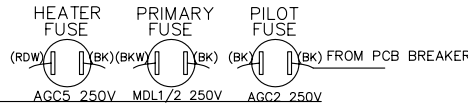
CONTROL CIRCUIT

ALL BRANCH CIRCUIT
PROTECTION
PROVIDED BY OTHERS

Note:
Requirement for Alarm and Pilot power supplies
may vary. If separate supplies are not required,
a jumper may be installed from the control
supply breaker at location P1 to the alarm
supply breaker at location A1. The neutral on
the printed circuit board at locations P2 and A2
must then be jumpered together.



BACK-SIDE INNER DOOR VIEW



POWER SUPPLY INSTALLATION NOTES:

1. DASHED LINES (---) REPRESENT TERMINALS, EQUIPMENT, AND/OR OPTIONS THAT MAY OR MAY NOT BE PRESENT IN EACH SYSTEM COVERED BY THIS MANUAL.
2. BRANCH CIRCUIT PROTECTION MUST BE PROVIDED BY OTHERS. CONSULT NEC AND/OR LOCAL CODES.
3. SINGLE (1) PHASE PUMP MOTORS MUST HAVE INTEGRAL THERMAL OVERLOAD PROTECTION.
4. TEMPERATURE RATING OF FIELD INSTALLED COPPER CONDUCTORS MUST BE AT LEAST 140°F (60°C)
5. FOR PUMPS THAT REQUIRE EXTERNAL CAPACITOR INSTALLATION KITS, SEE "K" PACK INSTALLATION INSERT PROVIDED.
6. PUMP SUPPLY MUST MATCH REQUIRED PUMP VOLTAGE. CONDUIT ENTRANCE MUST MATCH ENCLOSURE RATING.
7. PUMP AND PANEL VOLTAGE CODE MUST BE EQUIVALENT TO INCOMING PUMP AND CONTROL POWER SUPPLIES.
8. OVERLOAD/MOTOR PROTECTOR UNIT MAY REQUIRE ADJUSTMENT TO MATCH PUMP FULL LOAD AMPS (FLA).
9. SEPARATE OVERLOAD (O.L.) NOT REQUIRED WHEN PROTECTORS (MP) ARE SUPPLIED.
10. THE MANUFACTURER RECOMMENDS THAT CONTROL/ALARM SUPPLY BE SEPARATE FROM THE PUMP SUPPLY.
11. REFER TO BACKPLATE LAYOUT ON PAGE 4 FOR THE REQUIRED TORQUE SETTINGS FOR EACH COMPONENT.

COPYRIGHT © 2007 AMERICAN MANUFACTURING COMPANY, INC.

AMERICAN MANUFACTURING COMPANY, INC.
ELKWOOD, VIRGINIA 22718

MODEL#: DP124-SAB124-AHJLRX(MV)
DWG#: X9157P

DATE: 06/15/08
PAGE 2

CONTROL BOARD HOOKUP DIAGRAM (BASIC CONTROL CIRCUIT W/ ALARM)

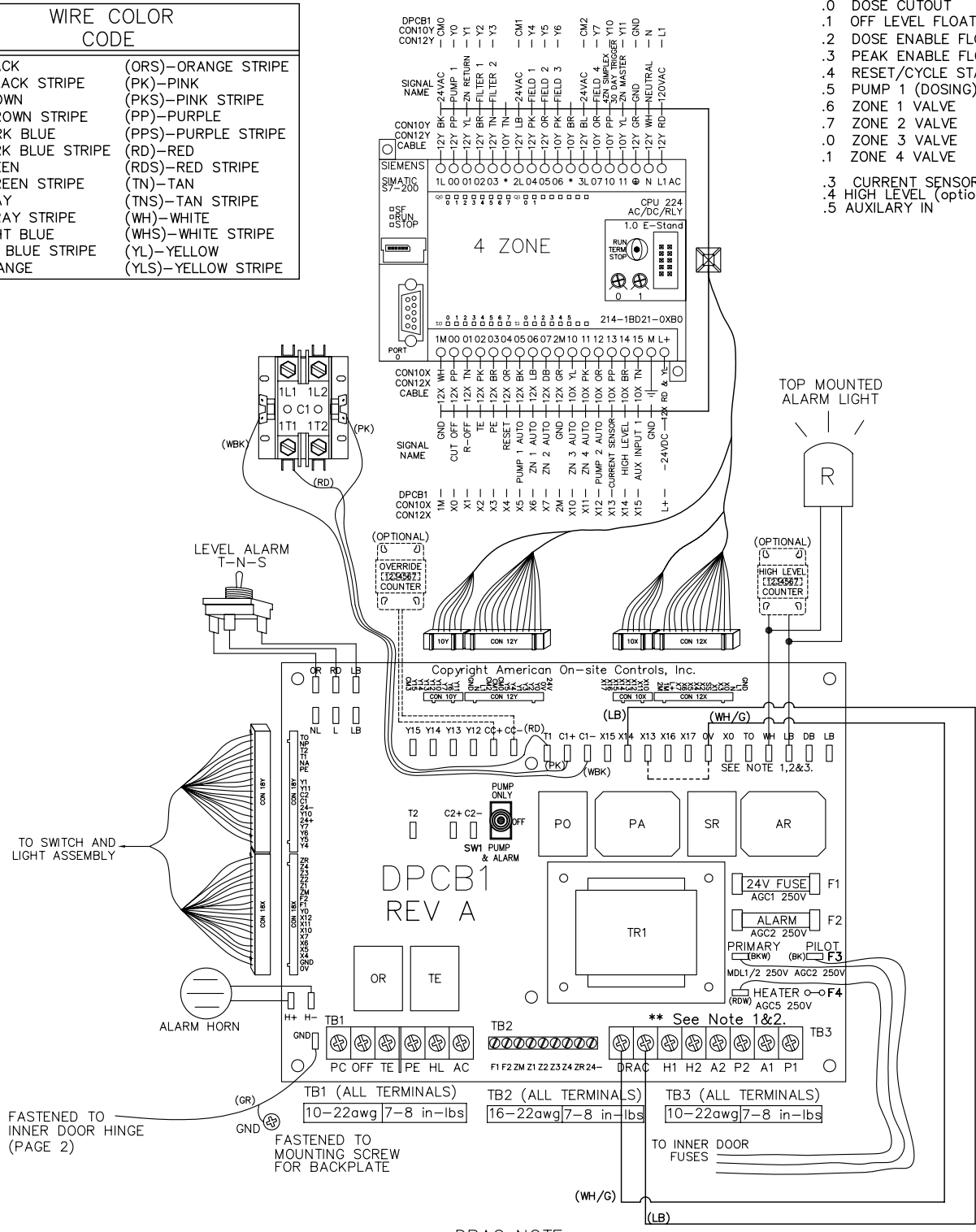
NOTES:
ALL WIRES ARE 18 awg
UNLESS OTHERWISE NOTED.

4 ZONE MICROPROCESSOR INPUTS/OUTPUTS

INPUT I0	OUTPUT Q0
.0 DOSE CUTOUT	.0 PUMP 1
.1 OFF LEVEL FLOAT	.1 ZONE RETURN
.2 DOSE ENABLE FLOAT	.2 FILTER 1
.3 PEAK ENABLE FLOAT	.3 FILTER 2
.4 RESET/CYCLE START	.4 FIELD 1
.5 PUMP 1 (DOSING)	.5 FIELD 2
.6 ZONE 1 VALVE	.6 FIELD 3
.7 ZONE 2 VALVE	.7 FIELD 4
.8 ZONE 3 VALVE	.8 30 DAY TRIGGER
.1 ZONE 4 VALVE	.1 ZONE MASTER
.3 CURRENT SENSOR	
.4 HIGH LEVEL (option)	
.5 AUXILIARY IN	

WIRE COLOR CODE

(BK)-BLACK	(ORS)-ORANGE STRIPE
(BKS)-BLACK STRIPE	(PK)-PINK
(BR)-BROWN	(PKS)-PINK STRIPE
(BRS)-BROWN STRIPE	(PP)-PURPLE
(DB)-DARK BLUE	(PPS)-PURPLE STRIPE
(DBS)-DRK BLUE STRIPE	(RD)-RED
(GR)-GREEN	(RDS)-RED STRIPE
(GRS)-GREEN STRIPE	(TN)-TAN
(GY)-GRAY	(TNS)-TAN STRIPE
(GYS)-GRAY STRIPE	(WH)-WHITE
(LB)-LIGHT BLUE	(WHS)-WHITE STRIPE
(LBS)-LT BLUE STRIPE	(YL)-YELLOW
(OR)-ORANGE	(YLS)-YELLOW STRIPE

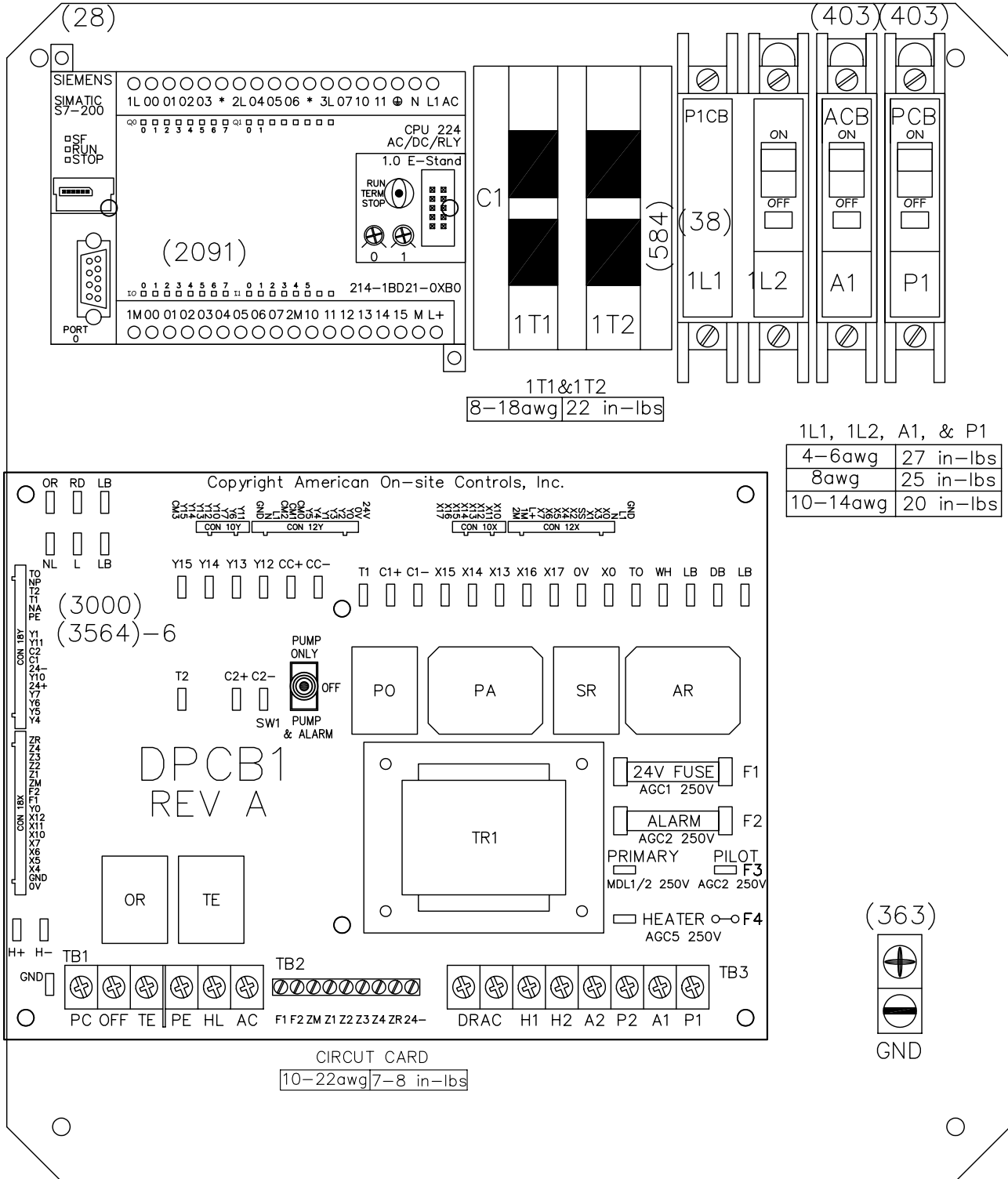


- NOTES:**
- STANDARD DRACS (DRY REMOTE ALARM CONTACTS) ARE NOT USABLE FOR REMOTE ALARM DEVICES WHEN HIGH LEVEL PLC INPUT WIRING SHOWN ABOVE IS USED.
 - OPTIONAL HIGH LEVEL PLC INPUT METHOD SHOWN ABOVE REQUIRES A OPTIONAL METHOD IF DRACS ARE NEEDED TO OPERATE A REMOTE ALARM DEVICE.
 - A JUMPER IS REQUIRED ON CONTROLLERS WITH A MULTIPLE PUMP PROGRAM IF THE CONTROLLER IS NOT EQUIPPED WITH PUMP FAIL.

DRAC NOTE:
TO USE A REMOTE ALARM, DISCONNECT WH/G AND LB WIRES FROM THE DRAC TERMINALS. WIRE REMOTE ALARM INTO DRAC TERMINALS PLEASE NOTE THE HIGH LEVEL COUNTER IN PLC IS DISABLED WHEN ACCESSING THE REMOTE ALARM OPTION

BACKPLATE LAYOUT

(55) (3592) (5) (776) (3099) (3007)
 (148) (3560) (6) (96) (3003) (3051)
 (266) (797) (2036) (2095) (3004) (3153)
 (629) (3005)



BACKPLATE NOTES:

- (xxxx) DENOTES ITEM NUMBER FOR ALL INSTALLED COMPONENTS.
- INSTALLERS MUST FOLLOW TORQUE SPECIFICATION PROVIDED. TERMINALS ARE LISTED ALONG WITH ACCEPTABLE WIRE SIZES AND MINIMUM/MAXIMUM TORQUE SETTINGS.

SHORT CIRCUIT RATINGS:
 PUMP 1 POWER CIRCUIT
 5kA rms @ 230Vmax

COPYRIGHT © 2007 AMERICAN MANUFACTURING COMPANY, INC.

AMERICAN MANUFACTURING COMPANY INC.
 ELKWOOD, VIRGINIA 22718

MODEL#: DP124-SAB124-AHJLRX(MV)
 DWG#: X9157P

DATE: 06/15/08
 PAGE 4